

# Monthly Progress Report

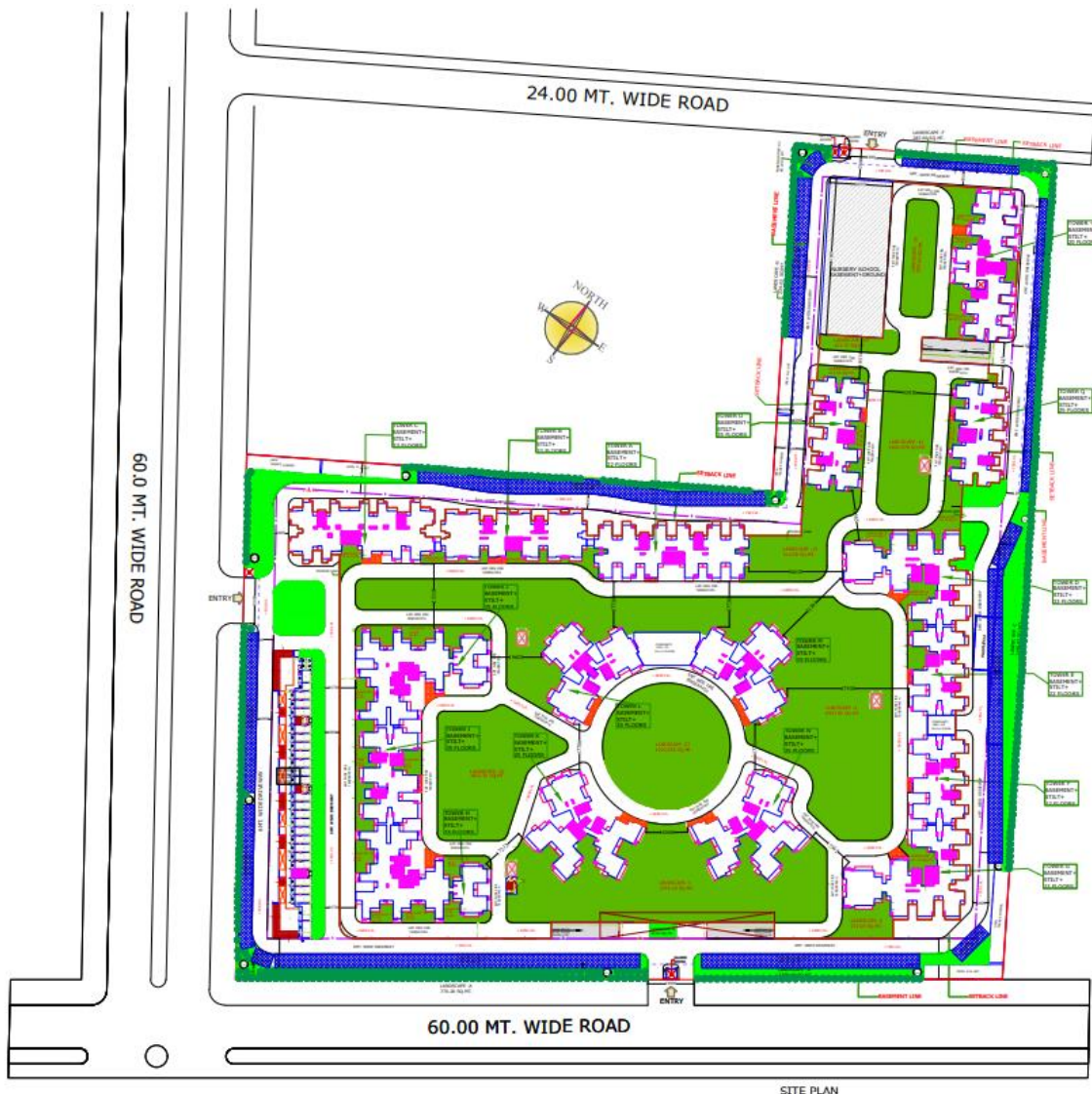
Project Name, Location :Ajnara Le-Garden ,Sector-16B, Greater Noida West

Report No : 01

Period : September 2025

## Contents

- LAYOUT PLAN
- PROJECT BRIEF
- PROJECT DIRECTORY
- EXECUTIVE SUMMARY
- PROJECT STATUS ON TQC ONBOARDING
- DETAILED WORK STATUS OF TOWER-Q
- QHSE CONCERNS
- WAY FORWARD
- OBSERVATIONS & RECOMMENDATIONS



Site Plan as per UP RERA website

# Project Brief

# Project Brief

PROJECT NAME	“Ajnara Le-Garden” , Sector-16B, Greater. Noida West, Gautam Buddha Nagar
CLIENT NAME	Ajnara Realtech Limited
PROJECT TYPE	Group Housing
FLOORS	Basements + Podium + 25 floors + Terrace ( Towers : Q and O) Basements + Podium + 20 floors + Terrace ( Towers : P)
NO. OF FLATS	599 Nos. ( Towers : P,Q and O)

# Project Directory

# Project Directory

S No.	CONTACT NAME	DESIGNATION	ADDRESS	MAIL ID
DEVELOPER: Ajnara Realtech Limited				
1	Mr. Arun Kumar Sharma	General Manager	Ajnara Realtech Limited, Sector 16B, Greater Noida West,Pin-201009	<a href="mailto:arun.kumar@ajnara.com">arun.kumar@ajnara.com</a>
2	Mr. Amitesh	Engineer		
3	Mr. Sanjay Misra	Site Foreman		
4	Mr. Rajkumar Ojha	Site Supervisor		
CLIENT: Le Garden Residents Welfare				
1	Mr. Nitin Madan	Resident	Ajnara Realtech Limited, Sector 16B, Greater Noida West,Pin-201009	<a href="mailto:nitinmadan1976@gmail.com">nitinmadan1976@gmail.com</a>
2	Mr. Sachin Dhiman	Resident		<a href="mailto:sachindhiman123@gmail.com">sachindhiman123@gmail.com</a>
IRP: CIRP of Ajnara Realtech				
1	Mr. Amar Pal	IRP	801, 8th Floor, Corenthum Iconic Tower, Sector - 62, Noida, UP	<a href="mailto:cirp.ajnaraindia@gmail.com">cirp.ajnaraindia@gmail.com</a>
IPMS:TQCert Service Pvt. Ltd(Tata Project Limited)				
1	Mr. Pankaj Kumar	Project Engineer	Splendid Tower,6th Floor,H.H.-1-8- 364,437,438 & 445 Begumpet,Hyderabad- 500003,Telangana,India	<a href="mailto:pankaj.kumar-v@tataprojects.com">pankaj.kumar-v@tataprojects.com</a>
2	Mr. Krashnkant Rajak	Manager-Billing &QS		<a href="mailto:krashnkant.r@tataprojects.com">krashnkant.r@tataprojects.com</a>
3	Mr. Chandar pal	Sr. Engineer		<a href="mailto:palchandra-c@tataprojects.com">palchandra-c@tataprojects.com</a>
4	Mr. Ritesh Pathak	HSE Engineer		<a href="mailto:riteshpathak-c@tataprojects.com">riteshpathak-c@tataprojects.com</a>
ARCHITECT & CONSULTANT (Structural & MEP)				
Details Awaited from Client				

# Executive Summary

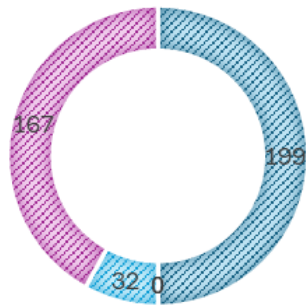


# Executive Summary – Status of work as on 30-Sep-25

Tower	Total Units	Handed Over	Ready for Handover	Work in Progress	No Work
O	200	172	8	0	20
Q	199	0	0	32	167
P	200	0	0	0	200
<b>TOTAL</b>	<b>599</b>	<b>172</b>	<b>8</b>	<b>32</b>	<b>387</b>

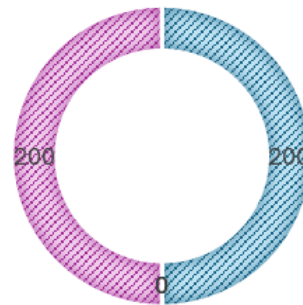
- Total Units
- Handed Over
- Ready for Handover
- Work in Progress
- No Work

## TOWER-Q



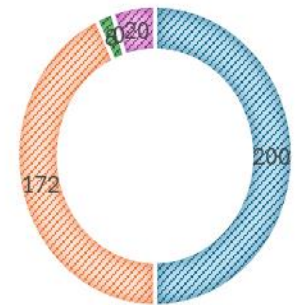
- Total Units
- Handed Over
- Ready for Handover
- Work in Progress
- No Work

## TOWER-P



- Total Units
- Handed Over
- Ready for Handover
- Work in Progress
- No Work

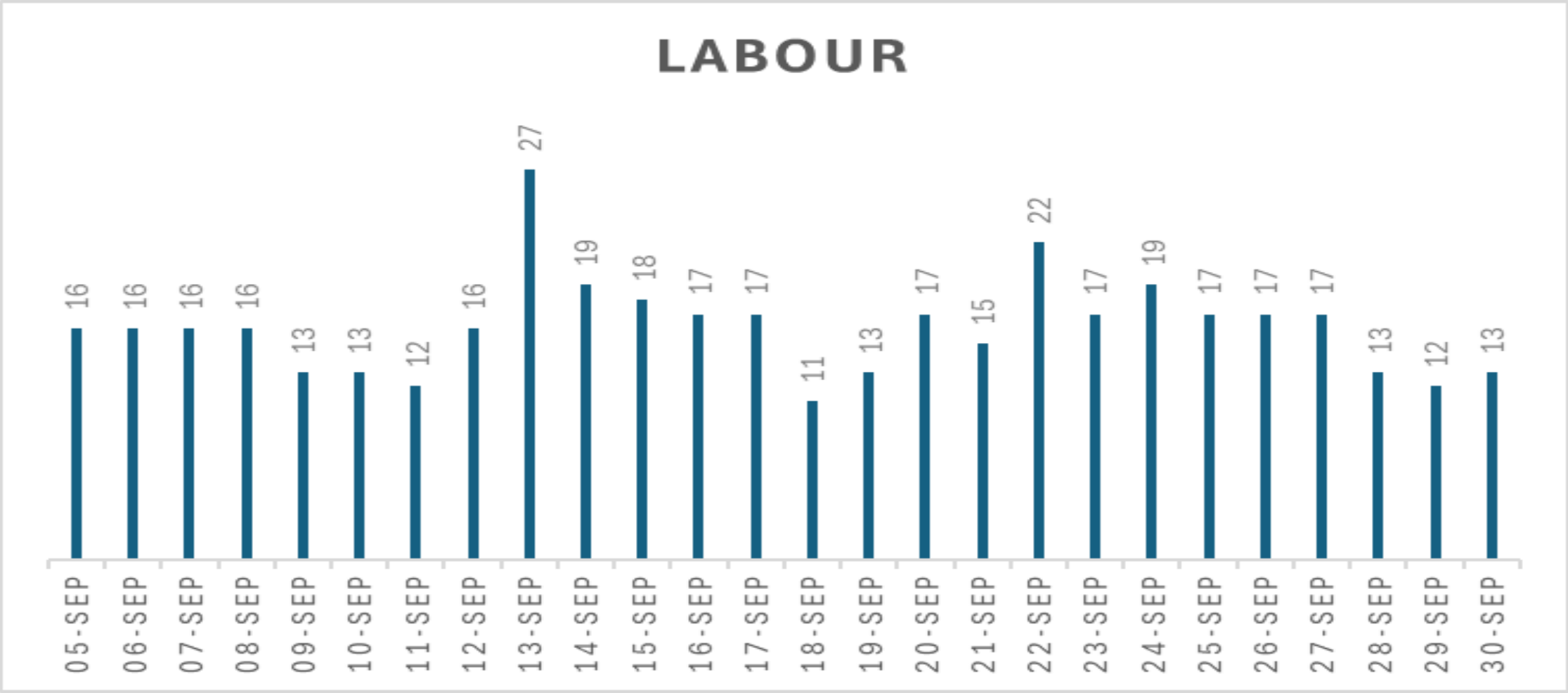
## TOWER-O





## Critical Issues for the Month : -

- Unavailability of Design Drawings with TQC team
- Acute shortage of required Manpower (Average 16 nos. manpower)
- Unavailability of material stock records & approved Make
- Details of Balance units to be Handed over Units (28 nos.)
- Previously maintained, MTC ,3rd party testing reports and QC records to be shared with TQC team
- Non availability of a decent site office & other facilities to TQC team
- Non deployment of manpower in Tower-P, Basement, Non Tower area surrounding to Tower O,P,Q



Average Labor Strength : 16 nos.

# Project Status on TQC Onboarding

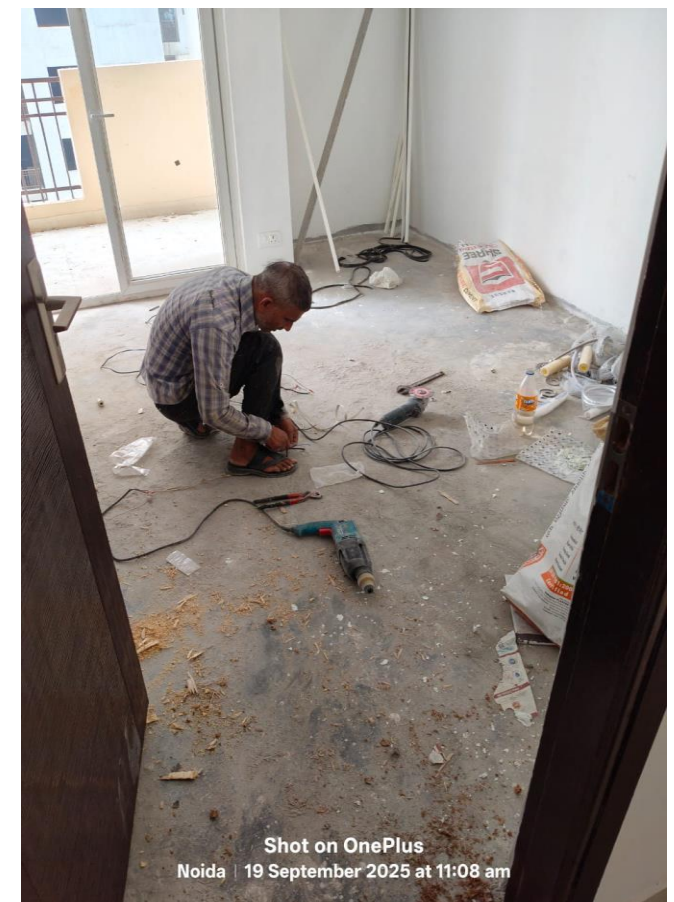
# Tower-O

Sr. No.	Activity	Level	TQC Onboarding	
			Status	Remarks
1	Excavation Work	Basement and Non-Tower	Completed	Tower is handed Over to Resident. 28 units are balanced for handing over to the client
2	Sub-Structure Work	Basement and Non-Tower	Completed	
3	Structure Work – All Floors	B+P/G+25+ Terrace	Completed	
4	Brick Work	B+P/G+25+ Terrace	Completed	
5	Plaster Work(Internal &External)	B+P/G+25+ Terrace	Completed	
6	Electrical & Fire Fighting Work	B+P/G+25+ Terrace	Completed	
7	Putti, Painting (Internal & External)	B+P/G+25+ Terrace	Completed	
8	All Lift work & Terrace Work		Completed	

# Tower-O : Photographs



Tower Elevation



Internal Works

S No.	Activity	Level	TQC Onboarding	
			Status	Remarks
1	Excavation Work	Basement and Non-Tower	Completed	
2	Sub-Structure Work	Basement and Non-Tower	Completed	
3	Structure Work – All Floors	B+P/G+25+ Terrace	Completed	
4	Brick Work	B+P/G+25+ Terrace	Completed	
5	Plaster Work (Internal & External)	B+P/G+25+ Terrace	Completed	
6	Electrical & Fire Fighting Work	B+P/G+25+ Terrace	Completed	Conduiting Work completed, Firefighting pipe laying work up to 19th floor completed as on 06.10.25
7	Putty, Painting (Internal & External)	B+P/G+25+ Terrace	Yet to Start	
8	All Lift work & Terrace Work		Yet to Start	



# Tower-Q : Photographs



Tower Elevation



Internal Works





Sr. No.	Activity	Level	TQC Onboarding	
			Status	Remarks
1	Excavation Work	Basement and Non-Tower	Completed	
2	Sub-Structure Work	Basement and Non-Tower	Completed	
3	Structure Work – All Floors	B+P/G+20+ Terrace	Structural Work of Basement and Podium/Ground Floor Completed	
4	Brick Work	B+P/G+20+ Terrace	Yet To Start	
5	Plaster Work (Internal & External)	B+P/G+20+ Terrace	Yet To Start	
6	Electrical & Fire Fighting Work	B+P/G+20+ Terrace	Yet To Start	
7	Putti, Painting (Internal & External)	B+P/G+20+ Terrace	Yet To Start	
8	All Lift work & Terrace Work		Yet To Start	

## Tower-P : Photographs



Structure Work

## Detailed Work Status-Tower Q

# Detailed Work Status of Tower-Q

TOWER Q WORK STATUS																															
S.no	Floor Name	R.C.C	Brick/Block work	Doors wooden				Plaster		Tile/Stone Flooring					Toilet						Kitchen			Fire Fighting work	Electrical Work		Plumbing Fiktures	MS Railing	Internal Putty	Balcony	
				Frame	Hard ware	Main shutter	Bed room Shutter	Internal Plaster	Outer plaster	Floors	IPS	Passage	Staircase1	Staircase 2	Ceiling C/M	Water proofing	Flooring	Cladding	Door frame	Shutter	Counter slab	Counter stone fixing	Cladding		Fiktures	Conduit				Waterproofing	Floor tiles
1	25th floor																														
	Flat no. 2501	Done	Done	Done				Done	Done	Done								Done		Done				Done		Done					
	Flat no. 2502	Done	Done	Done				Done	Done	Done								Done		Done				Done		Done					
	Flat no. 2503	Done	Done	Done				Done	Done									Done		Done				Done		Done					
	Flat no. 2504	Done	Done	Done				Done	Done	Done								Done		Done				Done		Done					
	Flat no. 2505	Done	Done	Done				Done	Done	Done								Done		Done				Done		Done					
	Flat no. 2506	Done	Done	Done				Done	Done	Done								Done		Done				Done		Done					
	Flat no. 2507	Done	Done	Done				Done	Done	Done								Done		Done				Done		Done					
	Flat no. 2508	Done	Done	Done				Done	Done	Done								Done		Done				Done		Done					
2	24th floor																														
	Flat no. 2401	Done	Done	Done				Done	Done	Done								Done		Done				Done		Done					
	Flat no. 2402	Done	Done	Done				Done	Done	Done								Done		Done				Done		Done					
	Flat no. 2403	Done	Done	Done				Done	Done									Done		Done				Done		Done					
	Flat no. 2404	Done	Done	Done				Done	Done	Done								Done		Done				Done		Done					
	Flat no. 2405	Done	Done	Done				Done	Done	Done								Done		Done				Done		Done					
	Flat no. 2406	Done	Done	Done				Done	Done	Done								Done		Done				Done		Done					
	Flat no. 2407	Done	Done	Done				Done	Done	Done								Done		Done				Done		Done					
	Flat no. 2408	Done	Done	Done				Done	Done	Done								Done		Done				Done		Done					
3	23th floor																														
	Flat no. 2301	Done	Done	Done				Done	Done	Done								Done		Done				Done		Done					
	Flat no. 2302	Done	Done	Done				Done	Done	Done								Done		Done				Done		Done					
	Flat no. 2303	Done	Done	Done				Done	Done									Done		Done				Done		Done					
	Flat no. 2304	Done	Done	Done				Done	Done	Done								Done		Done				Done		Done					
	Flat no. 2305	Done	Done	Done				Done	Done	Done								Done		Done				Done		Done					
	Flat no. 2306	Done	Done	Done				Done	Done	Done								Done		Done				Done		Done					
	Flat no. 2307	Done	Done	Done				Done	Done	Done								Done		Done				Done		Done					
	Flat no. 2308	Done	Done	Done				Done	Done	Done								Done		Done				Done		Done					
4	22th floor																														
	Flat no. 2201	Done	Done	Done				Done	Done	Done								Done		Done				Done		Done					
	Flat no. 2202	Done	Done	Done				Done	Done	Done								Done		Done				Done		Done					
	Flat no. 2203	Done	Done	Done				Done	Done									Done		Done				Done		Done					
	Flat no. 2204	Done	Done	Done				Done	Done	Done								Done		Done				Done		Done					
	Flat no. 2205	Done	Done	Done				Done	Done	Done								Done		Done				Done		Done					
	Flat no. 2206	Done	Done	Done				Done	Done	Done								Done		Done				Done		Done					
	Flat no. 2207	Done	Done	Done				Done	Done	Done								Done		Done				Done		Done					
	Flat no. 2208	Done	Done	Done	Done	Done		Done	Done	Done								Done		Done				Done		Done					
5	21th floor																														
	Flat no. 2101	Done	Done	Done				Done	Done	Done		Done						Done		Done				Done		Done					
	Flat no. 2102	Done	Done	Done				Done	Done	Done		Done						Done		Done				Done		Done					
	Flat no. 2103	Done	Done	Done				Done	Done			Done						Done		Done				Done		Done					
	Flat no. 2104	Done	Done	Done				Done	Done	Done		Done						Done		Done				Done		Done					
	Flat no. 2105	Done	Done	Done				Done	Done	Done		Done						Done		Done				Done		Done					
	Flat no. 2106	Done	Done	Done				Done	Done	Done		Done						Done		Done				Done		Done					
	Flat no. 2107	Done	Done	Done				Done	Done	Done		Done						Done		Done				Done		Done					
	Flat no. 2108	Done	Done	Done				Done	Done	Done		Done						Done		Done				Done		Done					

# Detailed Work Status of Tower-Q



A TATA Enterprise

S.no	Floor Name	R.C.C	Brick/Block work	Doors wooden				Plaster		Tile/Stone Flooring				Toilet						Kitchen			Fire Fighting work	Electrical Work		Plumbing Fixtures	Ms Railing	Internal Putty	Balcony		
				Frame	Hardware	Main shutter	Bed room Shutter	Internal Plaster	Outer plaster	Floors	IPS	Passage	Staircase1	Staircase 2	Ceiling C/M	Water proofing	Flooring	Cladding	Door frame	Shutter	Counter slab	Counter stone fixing		Cladding	Fixtures				Conduit	Waterproofing	Floor tiles
6	20th floor																														
	Flat no. 2001	Done	Done	Done				Done	Done	Done	Done	Done					Done			Done					Done			Done			
	Flat no. 2002	Done	Done	Done				Done	Done	Done	Done	Done					Done			Done					Done			Done			
	Flat no. 2003	Done	Done	Done				Done	Done				Done				Done			Done					Done			Done			
	Flat no. 2004	Done	Done	Done				Done	Done	Done			Done				Done			Done					Done			Done			
	Flat no. 2005	Done	Done	Done				Done	Done	Done			Done				Done			Done					Done			Done			
	Flat no. 2006	Done	Done	Done				Done	Done	Done	Done	Done	Done				Done			Done					Done			Done			
	Flat no. 2007	Done	Done	Done				Done	Done	Done	Done	Done	Done				Done			Done					Done			Done			
	Flat no. 2008	Done	Done	Done	Done	Done		Done	Done	Done		Done					Done			Done					Done			Done			
7	19th floor																														
	Flat no. 1901	Done	Done	Done				Done	Done	Done	Done	Done					Done			Done				Done		Done			Done		
	Flat no. 1902	Done	Done	Done				Done	Done	Done	Done	Done					Done			Done				Done		Done			Done		
	Flat no. 1903	Done	Done	Done				Done	Done				Done				Done			Done				Done		Done			Done		
	Flat no. 1904	Done	Done	Done				Done	Done	Done	Done	Done					Done			Done				Done		Done			Done		
	Flat no. 1905	Done	Done	Done				Done	Done	Done	Done	Done	Done				Done			Done				Done		Done			Done		
	Flat no. 1906	Done	Done	Done				Done	Done	Done	Done	Done					Done			Done				Done		Done			Done		
	Flat no. 1907	Done	Done	Done				Done	Done	Done	Done	Done					Done			Done				Done		Done			Done		
	Flat no. 1908	Done	Done	Done				Done	Done	Done	Done	Done					Done			Done				Done		Done			Done		
8	18th floor																														
	Flat no. 1801	Done	Done	Done				Done	Done	Done	Done	Done					Done	Done			Done			Done		Done			Done	Done	
	Flat no. 1802	Done	Done	Done				Done	Done	Done	Done	Done					Done	Done			Done			Done		Done			Done	Done	
	Flat no. 1803	Done	Done	Done				Done	Done				Done					Done			Done			Done		Done			Done		
	Flat no. 1804	Done	Done	Done				Done	Done	Done	Done	Done						Done			Done			Done		Done			Done	Done	
	Flat no. 1805	Done	Done	Done				Done	Done	Done	Done	Done						Done			Done			Done		Done			Done	Done	
	Flat no. 1806	Done	Done	Done				Done	Done	Done	Done	Done					Done	Done			Done			Done		Done			Done	Done	
	Flat no. 1807	Done	Done	Done				Done	Done	Done	Done	Done					Done	Done			Done			Done		Done			Done	Done	
	Flat no. 1808	Done	Done	Done				Done	Done	Done	Done	Done					Done	Done			Done			Done		Done			Done		
9	17th floor																														
	Flat no. 1701	Done	Done	Done				Done	Done	Done	Done	Done					Done	Done			Done			Done		Done			Done	Done	
	Flat no. 1702	Done	Done	Done				Done	Done	Done	Done	Done						Done			Done			Done		Done			Done	Done	
	Flat no. 1703	Done	Done	Done				Done	Done				Done	Done			Done	Done			Done			Done		Done			Done		
	Flat no. 1704	Done	Done	Done				Done	Done	Done	Done	Done					Done	Done	Done		Done			Done		Done			Done		
	Flat no. 1705	Done	Done	Done				Done	Done	Done	Done	Done					Done	Done			Done			Done		Done			Done		
	Flat no. 1706	Done	Done	Done				Done	Done	Done	Done	Done					Done	Done			Done			Done		Done			Done	Done	
	Flat no. 1707	Done	Done	Done				Done	Done	Done	Done	Done					Done	Done			Done			Done		Done			Done	Done	
	Flat no. 1708	Done	Done	Done				Done	Done	Done	Done	Done					Done	Done			Done			Done		Done			Done	Done	
10	16th floor																														
	Flat no. 1601	Done	Done	Done				Done	Done	Done	Done	Done						Done			Done			Done		Done			Done	Done	
	Flat no. 1602	Done	Done	Done				Done	Done	Done	Done	Done						Done			Done			Done		Done			Done	Done	
	Flat no. 1603	Done	Done	Done				Done	Done				Done	Done				Done			Done			Done		Done			Done		
	Flat no. 1604	Done	Done	Done				Done	Done	Done	Done	Done						Done			Done			Done		Done			Done	Done	
	Flat no. 1605	Done	Done	Done				Done	Done	Done	Done	Done						Done			Done			Done		Done			Done	Done	
	Flat no. 1606	Done	Done	Done				Done	Done	Done	Done	Done					Done	Done			Done			Done		Done			Done	Done	
	Flat no. 1607	Done	Done	Done				Done	Done	Done	Done	Done					Done	Done			Done			Done		Done			Done	Done	
	Flat no. 1608	Done	Done	Done				Done	Done	Done	Done	Done						Done			Done			Done		Done			Done	Done	



# Detailed Work Status of Tower-Q

S.no	Floor Name	R.C.C	Brick/Block work	Doors wooden				Plaster		Tile/Stone Flooring					Toilet						Kitchen			Fire Fighting work	Electrical Work		Plumbing Fixtures	Ms Railing	Internal Putty	Balcony	
				Frame	Hardware	Main shutter	Bed room Shutter	Internal Plaster	Outer plaster	Floors	IPS	Passage	Staircase1	Staircase 2	Ceiling C/M	Water proofing	Flooring	Cladding	Door frame	Shutter	Counter slab	Counter stone fixing	Cladding		Fixtures	Conduit				Waterproofing	Floor tiles
11	15th floor																														
	Flat no. 1501	Done	Done	Done				Done	Done	Done	Done	Done	Done			Done		Done	Done		Done			Done		Done		Done	Done	Done	
	Flat no. 1502	Done	Done	Done				Done	Done	Done	Done	Done	Done			Done		Done	Done		Done			Done		Done		Done	Done	Done	
	Flat no. 1503	Done	Done	Done				Done	Done			Done	Done			Done			Done		Done			Done		Done		Done		Done	
	Flat no. 1504	Done	Done	Done				Done	Done	Done	Done	Done	Done			Done			Done		Done			Done		Done		Done	Done	Done	
	Flat no. 1505	Done	Done	Done				Done	Done	Done	Done	Done	Done			Done			Done		Done			Done		Done		Done	Done	Done	
	Flat no. 1506	Done	Done	Done				Done	Done	Done	Done	Done	Done			Done		Done	Done		Done			Done		Done		Done	Done	Done	
	Flat no. 1507	Done	Done	Done				Done	Done	Done	Done	Done	Done			Done		Done	Done		Done			Done		Done		Done	Done	Done	
	Flat no. 1508	Done	Done	Done				Done	Done	Done	Done	Done	Done			Done		Done	Done		Done			Done		Done		Done	Done	Done	
12	14th floor																														
	Flat no. 1401	Done	Done	Done		Done		Done	Done	Done	Done	Done	Done			Done			Done		Done			Done		Done		Done	Done	Done	
	Flat no. 1402	Done	Done	Done		Done		Done	Done	Done	Done	Done	Done			Done			Done		Done			Done		Done		Done	Done	Done	
	Flat no. 1403	Done	Done	Done				Done	Done			Done	Done			Done			Done		Done			Done		Done		Done		Done	
	Flat no. 1404	Done	Done	Done		Done		Done	Done	Done	Done	Done	Done			Done			Done		Done			Done		Done		Done	Done	Done	
	Flat no. 1405	Done	Done	Done		Done		Done	Done	Done	Done	Done	Done			Done			Done		Done			Done		Done		Done	Done	Done	
	Flat no. 1406	Done	Done	Done		Done		Done	Done	Done	Done	Done	Done			Done		Done	Done		Done			Done		Done		Done	Done	Done	
	Flat no. 1407	Done	Done	Done		Done		Done	Done	Done	Done	Done	Done			Done		Done	Done		Done			Done		Done		Done	Done	Done	
	Flat no. 1408	Done	Done	Done		Done		Done	Done	Done	Done	Done	Done			Done			Done		Done			Done		Done		Done	Done	Done	
13	13th floor																														
	Flat no. 1301	Done	Done	Done		Done		Done	Done	Done	Done	Done	Done			Done		Done	Done		Done			Done		Done		Done	Done	Done	
	Flat no. 1302	Done	Done	Done		Done		Done	Done	Done	Done	Done	Done			Done		Done	Done		Done			Done		Done		Done	Done	Done	
	Flat no. 1303	Done	Done	Done				Done	Done			Done	Done			Done		Done	Done		Done			Done		Done		Done		Done	
	Flat no. 1304	Done	Done	Done		Done		Done	Done	Done	Done	Done	Done			Done		Done	Done		Done			Done		Done		Done	Done	Done	
	Flat no. 1305	Done	Done	Done		Done		Done	Done	Done	Done	Done	Done			Done		Done	Done		Done			Done		Done		Done	Done	Done	
	Flat no. 1306	Done	Done	Done		Done		Done	Done	Done	Done	Done	Done			Done		Done	Done		Done			Done		Done		Done	Done	Done	
	Flat no. 1307	Done	Done	Done		Done		Done	Done	Done	Done	Done	Done			Done		Done	Done		Done			Done		Done		Done	Done	Done	
	Flat no. 1308	Done	Done	Done		Done		Done	Done	Done	Done	Done	Done			Done		Done	Done		Done			Done		Done		Done	Done	Done	
14	12th floor																														
	Flat no. 1201	Done	Done	Done		Done		Done	Done	Done	Done	Done	Done			Done	Done	Done	Done		Done			Done		Done		Done	Done	Done	
	Flat no. 1202	Done	Done	Done		Done		Done	Done	Done	Done	Done	Done			Done	Done	Done	Done		Done			Done		Done		Done	Done	Done	
	Flat no. 1203	Done	Done	Done				Done	Done			Done	Done			Done	Done		Done		Done			Done		Done		Done		Done	
	Flat no. 1204	Done	Done	Done		Done		Done	Done	Done	Done	Done	Done			Done	Done	Done	Done		Done			Done		Done		Done		Done	
	Flat no. 1205	Done	Done	Done		Done		Done	Done	Done	Done	Done	Done			Done	Done	Done	Done		Done			Done		Done		Done	Done	Done	
	Flat no. 1206	Done	Done	Done		Done		Done	Done	Done	Done	Done	Done			Done	Done	Done	Done		Done			Done		Done		Done	Done	Done	
	Flat no. 1207	Done	Done	Done		Done		Done	Done	Done	Done	Done	Done			Done	Done	Done	Done		Done			Done		Done		Done	Done	Done	
	Flat no. 1208	Done	Done	Done		Done		Done	Done	Done	Done	Done	Done			Done	Done	Done	Done		Done			Done		Done		Done	Done	Done	
11	11th floor																														
	Flat no. 1101	Done	Done	Done		Done		Done	Done	Done	Done	Done	Done			Done	Done	Done	Done		Done			Done		Done		Done	Done	Done	
	Flat no. 1102	Done	Done	Done		Done		Done	Done	Done	Done	Done	Done			Done	Done	Done	Done		Done			Done		Done		Done	Done	Done	
	Flat no. 1103	Done	Done	Done				Done	Done			Done	Done			Done	Done	Done	Done		Done			Done		Done		Done		Done	
	Flat no. 1104	Done	Done	Done		Done		Done	Done	Done	Done	Done	Done			Done	Done	Done	Done		Done			Done		Done		Done	Done	Done	
	Flat no. 1105	Done	Done	Done		Done		Done	Done	Done	Done	Done	Done			Done	Done	Done	Done		Done			Done		Done		Done	Done	Done	
	Flat no. 1106	Done	Done	Done		Done		Done	Done	Done	Done	Done	Done			Done	Done	Done	Done		Done			Done		Done		Done	Done	Done	
	Flat no. 1107	Done	Done	Done		Done		Done	Done	Done	Done	Done	Done			Done	Done	Done	Done		Done			Done		Done		Done	Done	Done	
	Flat no. 1108	Done	Done	Done		Done		Done	Done	Done	Done	Done	Done			Done	Done	Done	Done		Done			Done		Done		Done	Done	Done	

# Detailed Work Status of Tower-Q

S.no	Floor Name	R.C.C	Brick/Block work	Doors wooden				Plaster		Tile/Stone Flooring					Toilet					Kitchen			Fire Fighting work	Electrical Work		Plumbing Fixtures	Ms Railing	Internal Putty	Balcony		
				Frame	Hardware	Main shutter	Bed room Shutter	Internal Plaster	Outer plaster	Floors	IPS	Passage	Staircase1	Staircase 2	Ceiling C/M	Water proofing	Flooring	Cladding	Door frame	Shutter	Counter slab	Counter stone fixing		Cladding	Fixtures				Conduit	Waterproofing	Floor tiles
15	10th floor																														
	Flat no. 1001	Done	Done	Done		Done		Done	Done	Done	Done	Done	Done	Done	Done	Done	Done	Done	Done	Done	Done	Done	Done		Done		Done	Done	Done	Done	Done
	Flat no. 1002	Done	Done	Done		Done		Done	Done	Done	Done	Done	Done	Done	Done	Done	Done	Done	Done	Done	Done	Done	Done		Done		Done	Done	Done	Done	Done
	Flat no. 1003	Done	Done	Done				Done	Done			Done	Done	Done	Done	Done	Done	Done	Done	Done	Done	Done	Done		Done		Done	Done		Done	Done
	Flat no. 1004	Done	Done	Done		Done		Done	Done	Done	Done	Done	Done	Done	Done		Done	Done	Done	Done	Done	Done	Done		Done		Done	Done	Done	Done	Done
	Flat no. 1005	Done	Done	Done		Done		Done	Done	Done	Done	Done	Done	Done	Done	Done	Done	Done	Done	Done	Done	Done	Done		Done		Done	Done	Done	Done	Done
	Flat no. 1006	Done	Done	Done		Done		Done	Done	Done	Done	Done	Done	Done	Done	Done	Done	Done	Done	Done	Done	Done	Done		Done		Done	Done	Done	Done	Done
	Flat no. 1007	Done	Done	Done		Done		Done	Done	Done	Done	Done	Done	Done	Done	Done	Done	Done	Done	Done	Done	Done	Done		Done		Done	Done	Done	Done	Done
	Flat no. 1008	Done	Done	Done		Done		Done	Done	Done	Done	Done	Done	Done	Done	Done	Done	Done	Done	Done	Done	Done	Done		Done		Done	Done	Done	Done	Done
16	09th floor																														
	Flat no. 0901	Done	Done	Done		Done		Done	Done	Done	Done	Done	Done	Done	Done	Done	Done	Done	Done	Done	Done	Done	Done		Done		Done	Done	Done	Done	Done
	Flat no. 0902	Done	Done	Done		Done		Done	Done	Done	Done	Done	Done	Done	Done	Done	Done	Done	Done	Done	Done	Done	Done		Done		Done	Done	Done	Done	Done
	Flat no. 0903	Done	Done	Done				Done	Done			Done	Done	Done	Done	Done	Done	Done	Done	Done	Done	Done	Done		Done		Done	Done	Done	Done	Done
	Flat no. 0904	Done	Done	Done		Done		Done	Done	Done	Done	Done	Done	Done	Done	Done	Done	Done	Done	Done	Done	Done	Done		Done		Done	Done	Done	Done	Done
	Flat no. 0905	Done	Done	Done		Done		Done	Done	Done	Done	Done	Done	Done	Done	Done	Done	Done	Done	Done	Done	Done	Done		Done		Done	Done	Done	Done	Done
	Flat no. 0906	Done	Done	Done		Done		Done	Done	Done	Done	Done	Done	Done	Done	Done	Done	Done	Done	Done	Done	Done	Done		Done		Done	Done	Done	Done	Done
	Flat no. 0907	Done	Done	Done		Done		Done	Done	Done	Done	Done	Done	Done	Done	Done	Done	Done	Done	Done	Done	Done	Done		Done		Done	Done	Done	Done	Done
	Flat no. 0908	Done	Done	Done		Done		Done	Done	Done	Done	Done	Done	Done	Done	Done	Done	Done	Done	Done	Done	Done	Done		Done		Done	Done	Done	Done	Done
17	08th floor																														
	Flat no. 0801	Done	Done	Done		Done		Done	Done	Done	Done	Done	Done	Done	Done	Done	Done	Done	Done	Done	Done	Done	Done		Done		Done	Done	Done	Done	Done
	Flat no. 0802	Done	Done	Done		Done	Done	Done	Done	Done	Done	Done	Done	Done	Done	Done	Done	Done	Done	Done	Done	Done	Done		Done		Done	Done	Done	Done	Done
	Flat no. 0803	Done	Done	Done				Done	Done			Done	Done	Done	Done	Done	Done	Done	Done	Done	Done	Done	Done		Done		Done	Done		Done	Done
	Flat no. 0804	Done	Done	Done		Done	Done	Done	Done	Done	Done	Done	Done	Done	Done	Done	Done	Done	Done	Done	Done	Done	Done		Done		Done	Done	Done	Done	Done
	Flat no. 0805	Done	Done	Done		Done	Done	Done	Done	Done	Done	Done	Done	Done	Done	Done	Done	Done	Done	Done	Done	Done	Done		Done		Done	Done	Done	Done	Done
	Flat no. 0806	Done	Done	Done		Done	Done	Done	Done	Done	Done	Done	Done	Done	Done	Done	Done	Done	Done	Done	Done	Done	Done		Done		Done	Done	Done	Done	Done
	Flat no. 0807	Done	Done	Done		Done	Done	Done	Done	Done	Done	Done	Done	Done	Done	Done	Done	Done	Done	Done	Done	Done	Done		Done		Done	Done	Done	Done	Done
	Flat no. 0808	Done	Done	Done		Done		Done	Done	Done	Done	Done	Done	Done	Done	Done	Done	Done	Done	Done	Done	Done	Done		Done		Done	Done	Done	Done	Done
18	07th floor																														
	Flat no. 0701	Done	Done	Done		Done	Done	Done	Done	Done	Done	Done	Done	Done	Done	Done	Done	Done	Done	Done	Done	Done	Done		Done		Done	Done	Done	Done	Done
	Flat no. 0702	Done	Done	Done		Done	Done	Done	Done	Done	Done	Done	Done	Done	Done	Done	Done	Done	Done	Done	Done	Done	Done		Done		Done	Done	Done	Done	Done
	Flat no. 0703	Done	Done	Done			Done	Done	Done	Done		Done	Done	Done	Done	Done	Done	Done	Done	Done	Done	Done	Done		Done		Done	Done		Done	Done
	Flat no. 0704	Done	Done	Done		Done	Done	Done	Done	Done	Done	Done	Done	Done	Done	Done	Done	Done	Done	Done	Done	Done	Done		Done		Done	Done	Done	Done	Done
	Flat no. 0705	Done	Done	Done		Done	Done	Done	Done	Done	Done	Done	Done	Done	Done	Done	Done	Done	Done	Done	Done	Done	Done		Done		Done	Done	Done	Done	Done
	Flat no. 0706	Done	Done	Done		Done	Done	Done	Done	Done	Done	Done	Done	Done	Done	Done	Done	Done	Done	Done	Done	Done	Done		Done		Done	Done	Done	Done	Done
	Flat no. 0707	Done	Done	Done		Done	Done	Done	Done	Done	Done	Done	Done	Done	Done	Done	Done	Done	Done	Done	Done	Done	Done		Done		Done	Done	Done	Done	Done
	Flat no. 0708	Done	Done	Done		Done	Done	Done	Done	Done	Done	Done	Done	Done	Done	Done	Done	Done	Done	Done	Done	Done	Done		Done		Done	Done	Done	Done	Done
19	06th floor																														
	Flat no. 0601	Done	Done	Done	Done	Done	Done	Done	Done	Done	Done	Done	Done	Done	Done	Done	Done	Done	Done	Done	Done	Done	Done		Done		Done	Done	Done	Done	Done
	Flat no. 0602	Done	Done	Done	Done	Done	Done	Done	Done	Done	Done	Done	Done	Done	Done	Done	Done	Done	Done	Done	Done	Done	Done		Done		Done	Done	Done	Done	Done
	Flat no. 0603	Done	Done	Done				Done	Done	Done	Done	Done	Done	Done	Done	Done	Done	Done	Done	Done	Done	Done	Done		Done		Done	Done		Done	Done
	Flat no. 0604	Done	Done	Done	Done	Done	Done	Done	Done	Done	Done	Done	Done	Done	Done	Done	Done	Done	Done	Done	Done	Done	Done		Done		Done	Done	Done	Done	Done
	Flat no. 0605	Done	Done	Done	Done	Done	Done	Done	Done	Done	Done	Done	Done	Done	Done	Done	Done	Done	Done	Done	Done	Done	Done		Done		Done	Done	Done	Done	Done
	Flat no. 0606	Done	Done	Done	Done	Done	Done	Done	Done	Done	Done	Done	Done	Done	Done	Done	Done	Done	Done	Done	Done	Done	Done		Done		Done	Done	Done	Done	Done
	Flat no. 0607	Done	Done	Done	Done	Done	Done	Done	Done	Done	Done	Done	Done	Done	Done	Done	Done	Done	Done	Done	Done	Done	Done		Done		Done	Done	Done	Done	Done
	Flat no. 0608	Done	Done	Done	Done	Done	Done	Done	Done	Done	Done	Done	Done	Done	Done	Done	Done	Done	Done	Done	Done	Done	Done		Done		Done	Done	Done	Done	Done






# Detailed Work Status of Tower-Q







S.no	Floor Name	R.C.C	Brick/Block work	Doors wooden				Plaster		Tile/Stone Flooring					Toilet						Kitchen			Fire Fighting work	Electrical Work		Plumbing Fixtures	Ms Railing	Internal Putty	Balcony	
				Frame	Hardware	Main shutter	Bed room Shutter	Internal Plaster	Outer plaster	Floors	IPS	Passage	Staircase1	Staircase 2	Ceiling C/M	Water proofing	Flooring	Cladding	Door frame	Shutter	Counter slab	Counter stone fixing	Cladding		Fixtures	Conduit				Waterproofing	Floor tiles
20	05th floor																														
	Flat no. 0501	Done	Done	Done	Done	Done	Done	Done	Done	Done	Done	Done	Done	Done		Done	Done	Done	Done		Done	Done	Done	Done		Done		Done	Done	Done	Done
	Flat no. 0502	Done	Done	Done	Done	Done	Done	Done	Done	Done	Done	Done	Done	Done		Done	Done	Done	Done		Done	Done	Done	Done		Done		Done	Done	Done	Done
	Flat no. 0503	Done	Done	Done				Done	Done	Done		Done	Done	Done		Done	Done	Done	Done		Done	Done	Done	Done		Done		Done		Done	Done
	Flat no. 0504	Done	Done	Done	Done	Done	Done	Done	Done	Done	Done	Done	Done	Done		Done	Done	Done	Done		Done	Done	Done	Done		Done		Done	Done	Done	Done
	Flat no. 0505	Done	Done	Done	Done	Done	Done	Done	Done	Done	Done	Done	Done	Done		Done	Done	Done	Done		Done	Done	Done	Done		Done		Done	Done	Done	Done
	Flat no. 0506	Done	Done	Done	Done	Done	Done	Done	Done	Done	Done	Done	Done	Done		Done	Done	Done	Done		Done	Done	Done	Done		Done		Done	Done	Done	Done
	Flat no. 0507	Done	Done	Done	Done	Done	Done	Done	Done	Done	Done	Done	Done	Done		Done	Done	Done	Done		Done	Done	Done	Done		Done		Done	Done	Done	Done
	Flat no. 0508	Done	Done	Done	Done	Done	Done	Done	Done	Done	Done	Done	Done	Done		Done	Done	Done	Done		Done	Done	Done	Done		Done		Done	Done	Done	Done
21	04th floor																														
	Flat no. 0401	Done	Done	Done	Done	Done	Done	Done	Done	Done	Done	Done	Done	Done		Done	Done	Done	Done		Done	Done	Done	Done		Done		Done	Done	Done	Done
	Flat no. 0402	Done	Done	Done	Done	Done	Done	Done	Done	Done	Done	Done	Done	Done		Done	Done	Done	Done		Done	Done	Done	Done		Done		Done	Done	Done	Done
	Flat no. 0403	Done	Done	Done				Done	Done	Done		Done	Done	Done		Done	Done	Done	Done		Done	Done	Done	Done		Done		Done		Done	Done
	Flat no. 0404	Done	Done	Done	Done	Done	Done	Done	Done	Done	Done	Done	Done	Done		Done	Done	Done	Done		Done	Done	Done	Done		Done		Done	Done	Done	Done
	Flat no. 0405	Done	Done	Done	Done	Done	Done	Done	Done	Done	Done	Done	Done	Done		Done	Done	Done	Done		Done	Done	Done	Done		Done		Done	Done	Done	Done
	Flat no. 0406	Done	Done	Done	Done	Done	Done	Done	Done	Done	Done	Done	Done	Done		Done	Done	Done	Done		Done	Done	Done	Done		Done		Done	Done	Done	Done
	Flat no. 0407	Done	Done	Done	Done	Done	Done	Done	Done	Done	Done	Done	Done	Done		Done	Done	Done	Done		Done	Done	Done	Done		Done		Done	Done	Done	Done
	Flat no. 0408	Done	Done	Done	Done	Done	Done	Done	Done	Done	Done	Done	Done	Done		Done	Done	Done	Done		Done	Done	Done	Done		Done		Done	Done	Done	Done
22	03rd floor																														
	Flat no. 0301	Done	Done	Done	Done	Done	Done	Done	Done	Done	Done	Done	Done	Done		Done	Done	Done	Done		Done	Done	Done	Done		Done		Done	Done	Done	Done
	Flat no. 0302	Done	Done	Done	Done	Done	Done	Done	Done	Done	Done	Done	Done	Done		Done	Done	Done	Done		Done	Done	Done	Done		Done		Done	Done	Done	Done
	Flat no. 0303	Done	Done	Done				Done	Done	Done		Done	Done	Done		Done	Done	Done	Done		Done	Done	Done	Done		Done		Done		Done	Done
	Flat no. 0304	Done	Done	Done	Done	Done	Done	Done	Done	Done	Done	Done	Done	Done		Done	Done	Done	Done		Done	Done	Done	Done		Done		Done	Done	Done	Done
	Flat no. 0305	Done	Done	Done	Done	Done	Done	Done	Done	Done	Done	Done	Done	Done		Done	Done	Done	Done		Done	Done	Done	Done		Done		Done	Done	Done	Done
	Flat no. 0306	Done	Done	Done	Done	Done	Done	Done	Done	Done	Done	Done	Done	Done		Done	Done	Done	Done		Done	Done	Done	Done		Done		Done	Done	Done	Done
	Flat no. 0307	Done	Done	Done	Done	Done	Done	Done	Done	Done	Done	Done	Done	Done		Done	Done	Done	Done		Done	Done	Done	Done		Done		Done	Done	Done	Done
	Flat no. 0308	Done	Done	Done	Done	Done	Done	Done	Done	Done	Done	Done	Done	Done		Done	Done	Done	Done		Done	Done	Done	Done		Done		Done	Done	Done	Done
23	02nd floor																														
	Flat no. 0201	Done	Done	Done	Done	Done	Done	Done	Done	Done	Done	Done	Done	Done		Done	Done	Done	Done		Done	Done	Done	Done		Done		Done		Done	Done
	Flat no. 0202	Done	Done	Done	Done	Done	Done	Done	Done	Done		Done	Done	Done		Done	Done	Done	Done		Done		Done	Done		Done		Done		Done	Done
	Flat no. 0203	Done	Done	Done	Done			Done	Done	Done		Done	Done	Done		Done	Done	Done	Done		Done	Done	Done	Done		Done		Done		Done	Done
	Flat no. 0204	Done	Done	Done	Done	Done	Done	Done	Done	Done	Done	Done	Done	Done	Done	Done	Done	Done	Done	Done	Done	Done	Done		Done		Done	Done	Done	Done	Done
	Flat no. 0205	Done	Done	Done	Done	Done	Done	Done	Done	Done	Done	Done	Done	Done		Done	Done	Done	Done		Done	Done	Done	Done		Done		Done	Done	Done	Done
	Flat no. 0206	Done	Done	Done	Done	Done	Done	Done	Done	Done	Done	Done	Done	Done		Done	Done	Done	Done		Done	Done	Done	Done		Done		Done	Done	Done	Done
	Flat no. 0207	Done	Done	Done	Done	Done	Done	Done	Done	Done	Done	Done	Done	Done		Done	Done	Done	Done		Done	Done	Done	Done		Done		Done	Done	Done	Done
	Flat no. 0208	Done	Done	Done	Done	Done	Done	Done	Done	Done	Done	Done	Done	Done		Done	Done	Done	Done		Done	Done	Done	Done		Done		Done		Done	Done
24	01st floor																														
	Flat no. 0101	Done											Done	Done		Done	Done	Done	Done		Done	Done	Done								
	Flat no. 0102	Done											Done	Done		Done	Done	Done	Done		Done	Done	Done								
	Flat no. 0103	Done											Done	Done		Done	Done	Done	Done		Done	Done	Done								
	Flat no. 0104	Done											Done	Done		Done	Done	Done	Done		Done	Done	Done								
	Flat no. 0105	Done											Done	Done		Done	Done	Done	Done		Done	Done	Done								
	Flat no. 0106	Done											Done	Done		Done	Done	Done	Done		Done	Done	Done								
	Flat no. 0107	Done											Done	Done		Done	Done	Done	Done		Done	Done	Done								
	Flat no. 0108	Done											Done	Done		Done	Done	Done	Done		Done	Done	Done								

# QHSE-Concerns

# Safety Concerns

Reference Image	Observation	Risk / Impact	Concern Raised Date	Status	Corrective Action Required	Responsibility	Standard Closure Timeline
	Implementation of use of PPEs is not visible at site	Risk of injury, non-compliance with BOCW Act	25.09.25	Open	Enforce PPE usage	Contractor & Safety Officer	Immediate (within 24 hrs)
	Safety Awareness is lacking in all respect	Unsafe practices; increased accident probability	25.09.25	Open	HSE system to be implemented	Safety Officer	Within 3 days
	Poor Housekeeping in project	Unsafe work place, reduction in productivity, damage of material	25.09.25	Open	Deploy housekeeping team; daily cleaning schedule	Contractor (Site Supervisor)	Daily

# Quality Concerns

Reference Image	Observation	Risk / Impact	Concern Raised Date	Status	Corrective Action Required	Responsibility	Standard Closure Timeline
	Damaged bag of cement & Cement mix proportion in water proofing works varies from specification	Chances of leakage	25.09.25	Open	Use proper mix proportion, Display guidelines	Contractor (Procurement)	Within 2 days
	Mortar for tile flooring mixed without measuring box	Chances of variable mix proportion	25.09.25	Open	Use measuring boxes; follow mix ratio as per IS code	Contractor (Finishing Team)	Immediate
	Materials (sand, cement, tiles) not stacked properly	Chances of Increase in damage and wastage	25.09.25	Open	Stack materials on pallets; label and cover as per standards	Contractor (Store In-Charge)	Within 2 days
	Waterproofing preparation in sunken area not as per spec; no MST provided	Leakage risk; rework cost	25.09.25	Open	Follow approved method statement; ensure surface prep and primer	Contractor (Waterproofing Team)	Within 3 days
	No MTCs provided for materials	Traceability concern during audit	25.09.25	Open	Submit MTCs for all incoming materials; maintain register	Contractor (QA/QC)	Within 2 days
	No previous records of waterproofing testing	No validation of work quality	25.09.25	Open	Conduct testing; maintain test reports and logs	Contractor (QA/QC)	Within 3 days

# Way Forward

# Way Forward

Category	Action / Next Step	Responsibility	Timeline (Next 4 Weeks)
Design & Documentation	Providing pending design drawings for Towers O, P, Q	Developer	Week 1
	Compile QC records, MTCs, 3rd party test reports	PMC	Week 1–2
	Finalize RA bill format & reconcile executed quantities	PMC + Developer	Week 2
Resource Deployment	Increase labour strength from ~16 to at least 50–60 nos.	Contractor (monitored by PMC)	Week 1–2
	Deploy core PMC team (Civil/Finishes, HSE, QS; MEP to follow)	PMC	Week 1–3
	Provide site office facilities (AC cabin, washroom, pantry, internet, power)	Developer	Week 1
Tower-Wise Recovery	<b>Tower Q</b> – Daily flat-wise progress tracking; initiate finishing works (plaster, flooring, electrical conduits)	PMC + Contractor	Continuous (Week 1–4)
	<b>Tower O</b> – Secure access to balance 28 units; start documentation & manpower deployment	Developer + PMC	Week 2
	<b>Tower P</b> – Prepare catch-up plan for stalled structure works; mobilize resources	PMC + Contractor	Week 3–4
Quality, Health & Safety	Enforce PPE compliance, toolbox talks, and safety signage	PMC + Contractor	Immediate (Week 1 onwards)
	Issue NCRs/CAPAs for observed non-conformities	PMC QA/QC	Weekly
Stakeholder Coordination	Weekly executive summary to IRP (progress, manpower, QHSE stats, risks)	PMC	Every Week

# Observations & Recommendations



- **Approach of Tower Q needs to be taken up on priority. A proper landscape needs to be developed**
- **Ground floor cleaning and basic civil works such as VDF etc needs to be done**
- **Over Head Tanks along with other piping system ( ring main) needs to be taken up immediately as this will help in checking of PL-FF lines and will ease units handing over**
- **Corridor of all the floors need to be taken on priority as this will give some sort of feel of site readiness and clean approach to customer**
- **Needs to speed up tiling works so that opening can be made ready for taking sizes of UPVC D/W**
- **Implementation of HSE & QMS system at site is must**
- **Display of safety signages to create awareness**



Name : Atul Gupta

Email : atulgupta-c@tataprojects.com

<https://tqcert.in>